

© 2022. Rokiah Othman, Khairunisa Muthusamy, Mohd Arif Sulaiman, Youventharan Duraisamy, Ramadhansyah Putra Jaya, Chong Beng Wei, Mohd Mustafa Al Bakri Abdullah, Sajjad Ali Mangi, Marcin Nabiałek, Agata Śliwa. pp. 627–643

This is an open-access article distributed under the terms of the Creative Commons Attribution-NonCommercial-NoDerivatives License (CC BY-NC-ND 4.0, <https://creativecommons.org/licenses/by-nc-nd/4.0/>), which permits use, distribution, and reproduction in any medium, provided that the Article is properly cited, the use is non-commercial, and no modifications or adaptations are made.



Research paper

Compressive strength and durability of foamed concrete incorporating Processed Spent Bleaching Earth

Rokiah Othman¹, Khairunisa Muthusamy², Mohd Arif Sulaiman³,
 Youventharan Duraisamy⁴, Ramadhansyah Putra Jaya⁵,
 Chong Beng Wei⁶, Mohd Mustafa Al Bakri Abdullah⁷,
 Sajjad Ali Mangi⁸, Marcin Nabiałek⁹, Agata Śliwa¹⁰

Abstract: Foamed concrete incorporating processed spent bleaching earth (PSBE) produces environmentally friendly foamed concrete. Compressive strength, porosity, and rapid chloride penetration tests were performed to investigate the potential application for building material due to its low density and porous concrete. Laboratory results show that 30% PSBE as cement replacement in foamed concrete produced higher compressive strength. Meanwhile, the porosity of the specimen produced by 30% PSBE was 45% lower than control foamed concrete. The porosity of foamed concrete incorporating PSBE decreases due to the fineness of PSBE that reduces the volume of void space between cement and fine aggregate. It was effectively blocking the pore and enhances the durability. Consistently, the

¹PhD., Faculty of Civil Engineering Technology, University Malaysia Pahang, 26300 Gambang, Pahang, Malaysia, e-mail: rokiah@ump.edu.my

²PhD., Faculty of Civil Engineering Technology, University Malaysia Pahang, 26300 Gambang, Pahang, Malaysia, e-mail: khairunisa@ump.edu.my, ORCID: 0000-0002-9378-1867

³M.Sc., Faculty of Civil Engineering Technology, University Malaysia Pahang, 26300 Gambang, Pahang, Malaysia, e-mail: mdarif@ump.edu.my, ORCID: 0000-0002-4868-0549

⁴PhD., Department of Civil Engineering, College of Engineering, University Malaysia Pahang, 26300 Gambang, Pahang, Malaysia, e-mail: youventharan@ump.edu.my, ORCID: 0000-0001-6399-0708

⁵Prof., Department of Civil Engineering, College of Engineering, University Malaysia Pahang, 26300 Gambang, Pahang, Malaysia, e-mail: ramadhansyah@ump.edu.my, ORCID: 0000-0002-5255-9856

⁶M.Sc., Faculty of Civil Engineering Technology, University Malaysia Pahang, 26300 Gambang, Pahang, Malaysia, e-mail: bengwei.chong@aiesec.net, ORCID: 0000-0002-2185-0894

⁷MSc., Center of Excellence Geopolymer and Green Technology, University Malaysia Perlis (UniMAP), 01000 Kangar Perlis, Malaysia, e-mail: mustafa_albakri@unimap.edu.my, ORCID: 0000-0002-9779-8586

⁸Prof., Department of Civil Engineering, Mehran University of Engineering and Technology, SZAB Campus, Khairpur Mirs, Sindh 66020, Pakistan, e-mail: sajjad.nec@muetkhp.edu.pk, ORCID: 0000-0003-4770-9108

⁹Prof., Department of Physics, Faculty of Production Engineering and Materials Technology, Częstochowa University of Technology, Częstochowa, e-mail: nmarcell@wp.pl, ORCID: 0000-0001-6585-3918

¹⁰PhD., Division of Materials Processing Technology and Computer Techniques in Materials Science, Silesian University of Technology, 44-100 Gliwice, Poland, e-mail: agata.sliwa@polsl.pl, ORCID: 0000-0001-9459-3895

positive effect of incorporating of PSBE has decreased the rapid chloride ion permeability compared to that control foamed concrete. According to ASTM C1202-19 the foamed concrete containing 30% PSBE was considered low moderate permeability based on its charge coulombs value of less than 4000. Besides, the high chloride ion permeability in foamed concrete is because the current quickly passes through the specimen due to its larger air volume. In conclusion, incorporating PSBE in foamed concrete generates an excellent pozzolanic effect, producing more calcium silicate hydrate and denser foamed concrete, making it greater, fewer voids, and higher resistance to chloride penetration.

Keywords: strength, porosity, chloride resistance, foamed concrete, processed spent bleaching earth

1. Introduction

A pozzolan material, namely Processed spent bleaching earth (PSBE), is derived from processing deoiled spent bleaching earth (SBE) after the oil is recovered. The bleaching earth is excellent powder clay, and its main component is silicon dioxide used for the refining process of palm oil, and its by-product is known as SBE, which is commonly disposed to landfill [1]. The SBE is generated about 240,000 tons per annum in Malaysia due to its refining process of crude palm oil [2]. Among the most prominent palm oil producers globally, Malaysia will produce large quantities of SBE, and it is becoming increasingly difficult to ignore the disposal of SBE when palm oil production increases rapidly. Furthermore, disposal of SBE may lead to a negative impact on the environment if not managed properly. SBE can present potential fire and pollution hazards because it contains 20 to 40% residual oil by weight, metallic impurities, and organic compounds upon its disposal. SBE disposal has been resolved by removing the oil and colouring materials [3] and reuse as material production [4]. The recovery of oil from SBE can be extracted to produce biodiesel [5], and the deoiled SBE has been reused as an adsorbent in wastewater treatment, as a clay substitute in the bricks, blocks, and tile manufacturing [6], and as a filler in asphalts [7]. On the other hand, SBE has been incinerated for cement manufacturing in Japan and Kenya [8]. Partial replacement of Portland cement by PSBE has been proven to be effective in increasing compressive strength of foamed concrete and the use of 30%PSBE enable to exhibit higher resistance from deterioration to against sulphate attack due to the formation of dense microstructure which inhibit the ingress of sulphate ions and reduces the formation of expansive ettringite that leads to reduce the propagation of micro cracks [1]. But, the effect of PSBE on the durability of foamed concrete is limited in the literature. Hence, this research aims to investigate the compressive strength, porosity and rapid chloride permeability of foamed concrete containing 30% PSBE.

Foamed concrete (FC) is the mixing of cement paste and preformed foams and provides lower density, ease of handling, self-compacting [9, 10], and cost savings [11]. It is considered eco-friendly concrete [12–14] and economical because its content has no aggregate, and any supplementary cementitious material can be used as sand or cement in FC. Among the pozzolanic material used as partial cement replacement in FC, fly ash [15, 16], silica fume [17], ground granulated blast furnace slag [18], rice husk ash [19], sewage sludge ash [20], sludge paper mill [21], graphite tailing [22], palm oil fuel ash [23, 24] and soil

as sand [25] replacement. Most of the research reported that the positive effects of pozzolanic material in FC enhance the long-term strength, improve durability, economical and eco-friendly due to reducing greenhouse gas emissions, including carbon dioxide, reuse industrial waste, and minimizing cement usage.

The porosity is the measurement of total air voids in the hardened FC, which can be determined by using Vacuum saturation Apparatus as confirmed to ASTM C642-13 [26]. The researchers [27–29] found a linear relationship between porosity and compressive strength of FC. The reduction in porosity increased the compressive strength of FC due to its denser product. The lower porosity indicates the less pores connected, making the strength higher, low water absorption, and permeability. Kersley & Wainwright [30] determined that the reduction in porosity is due to fly ash content increased. It is revealed that the porosity depends on dry density, where the porosity decreased from 67% to 29% when dry density increased from 1000 kg/m³ to 2000 kg/m³. Similarly, Yang & Song [31] reported that a density of 1400 kg/m³ using ground granulated blast-furnace slag (GGBS) with a higher fineness had a lower porosity, fewer unhydrated particles, and a denser surface. It is observed that the porosity of FC containing GGBS decreased as the increased percentage of GGBS in the mix. It has been pointed out that the reactive silica content determines the pozzolanic reaction and specific surface area and mineralogical composition of the pozzolan material leads to a positive effect on the FC properties [32]. This is because the pozzolanic reaction between pozzolan (silica) and the calcium hydroxide (CH) produced additional calcium silicate gel (CSH) that enhanced the strength of FC and increased the durability of FC. The addition of pozzolan can reduce the pore size and reduce the porosity, leading to increased strength.

Chloride permeability is defined as the flow of chloride ions through the pores of FC. The performance of FC against chloride ions is significant because it leads to the corrosion of reinforcement and then causes deterioration of the structure. The rapid chloride permeability test (RCPT) is performed on cylinder specimen by measuring the electrical current passing through a specimen for a standard 6 hours at a standard voltage of 60VDC according to ASTM C1202-19 [33]. The total charge passing through the specimen is measured and expressed in Coulombs. Table 1 presents the chloride ion penetrability based on charge passes. The reduction in total charge value indicates more resistance to chloride ion penetration and lower permeability. The penetration of chloride ions can cause corrosion of concrete and reinforcement due to expansive products produced in the reaction of chloride ions with concrete components, mainly calcium hydroxide (Ca(OH)₂). The expansive product, alkaline calcium chloride Ca(OH)₂·H₂O·CaCl₂, increases its volume during crystallization and causes damage to concrete [34]. It has been observed that the chloride permeability of the concrete reduced when incorporating pozzolans compared to decreasing the w/c ratio in the mixture [35]. The chloride ion resistance of concrete depends more on the porosity and interconnectivity of the pore system, and it does not depend much on the chemical bonding capacity of cement [36]. It has been revealed that the charge passing (Coulombs) through the calcined clay specimens decreases with the increase in calcined clay content up to 10%. However, at 12.5% of calcined clay, the charge passing increases with calcined clay content. It indicates the significant chloride ion resistance by

replacing cement with calcined clay [37]. Also, there is a relationship between the charge passed and the carbonation depth of concrete. The total charge passed reduces when the increase in carbonation depth increases. It demonstrated that carbonation reduces chloride ion diffusion. It indicates that the carbonation decreases surface porosity after carbonation and has lower chloride ion penetration [38].

Table 1. Classification of flow Chloride ion

Level penetrability	Ion passed (Coulombs)
High	> 4000
Moderate	2000–4000
Low	1000–2000
Very low	100–1000
Negligible	< 100

Hence, incorporating a suitable amount of pozzolan material enhances the strength and durability of FC. The foamed concrete incorporating PSBE is unavailable. This research focuses on the effect of PSBE as partial cement replacement in FC on compressive strength, porosity, and chloride permeability. Besides, less usage cement content can promote waste materials, reduce CO₂ emissions, and conserve energy and resources.

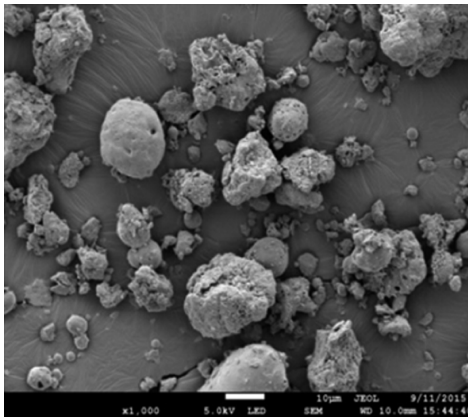
2. Research methodology

2.1. Properties of materials

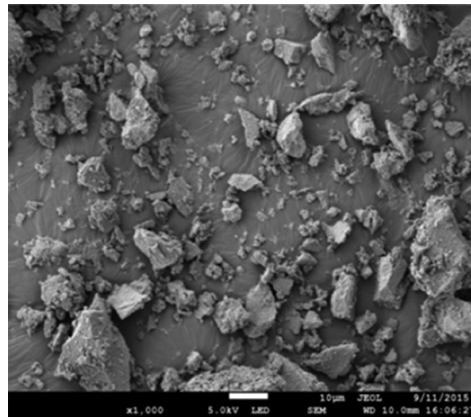
The properties of FC making materials have been discussed accordingly, including a foaming agent, silica sand, pozzolan material, cement, and water. LCM Technology Sdn. Bhd. manufactured the hydrolyzed protein foaming agent. Bhd. Kuantan is conforming to ASTM C796-19 [39]. The foaming agent is not hazardous and meets the requirements of ASTM C869-16 [40]. Johor Silica Industries Technology Sdn manufactured silica sand. Bhd with a 425 µm sieve (No. 425 ASTM) conforming to BS EN 12620 [41]. The Eco Innovation Sdn.Bhd. provided the pozzolan material, namely processed spent bleaching earth (PSBE). Table 2 provided pozzolan material's chemical composition and physical properties and ordinary Portland cement (OPC). Based on ASTM C618-12 [42], PSBE was classified as Class N Pozzolan and conformed to BS Specification for Pulverized-Fuel for Portland cement use, BS EN 450-1 [43]. Fig. 1a shows that PSBE is spherical in shape, porous and smooth surface compared to OPC, which is angular and irregular in shape as presented in Fig. 1b. The function of water in this study is for mixing concrete and curing the specimen.

Table 2. Properties of PSBE and OPC

Composition (%)	PSBE	OPC
Silicon oxide	55.82	16.05
Aluminum oxide	13.48	3.67
Calcium oxide	6.6	62.28
Ferrous oxide	8.24	3.41
Magnesium oxide	5.94	0.56
Sulfur trioxide	1.05	4.10
Total of $\text{SiO}_2 + \text{Al}_2\text{O}_3 + \text{Fe}_2\text{O}_3$	77.54	–
Loss on Ignition	0.18	1.2
Surface Area (BET) m^2/g	8.484	4.459
Specific gravity	2.44	3.1



(a) PSBE



(b) OPC

Fig. 1. Particle shape of PSBE and OPC

2.2. Production of foamed concrete

The production of FC consists of the mixing process, casting of specimens, and curing conditions. The control FC specimen, which contained only cement, sand, water, and foam, was set as a reference and the PFC specimen is the mixture that contains 30% PSBE as partial cement replacement. The mix proportion in Table 3 was constantly set up for water-cement ratio, sand cement ratio, dilution ratio, and percentage of foam dosage at 0.5, 1.5, 1:25, and 25%, accordingly [44, 45]. Fig. 2 shows the process flow of making FC. Firstly, the mixer drum prepares the mortar or cement paste by dry mixing of cement, silica sand,

and PSBE. Water is added after a few minutes and mixed them homogeneously. Next, before the preformed foam is added to the mixer, the density and workability of the mortar were measured. A mortar density is obtained by weight of 1 L of its paste in the beaker. Secondly, the preformed foam is prepared based on its dilution ratio, which dilutes 1 L of a foaming agent and 25 L of water. Before being added to the mixer drum, foam density is measured and controlled at 50 kg/m^3 . The foam is added to the mixer and mixed well until no bubbles come up. Again, a density of FC is obtained by weight of 1 L of the mix until 1600 kg/m^3 is desired. Finally, the slurry of FC is used to cast cube specimen size $100 \times 100 \times 100 \text{ mm}$ and cylinder size diameter $100 \times 200 \text{ mm}$ height. After 24 h, demolded all specimens. Due to different curing methods, all specimens were cured and tested at various ages of 7 days, 28 days, 3 months, 6 months, and 1 year. In this study, the specimens were subjected to five different curing regimes such as air curing (AC), water immersion (WI), natural weather (NW), 7 days water immersion, and then followed by air curing (7 AC) and 7 days water immersion and then followed by natural weather curing (7 NW). All the equipment, materials, and procedures in producing foamed concrete have been implemented were by ASTM C796-19 [39].



Fig. 2. Process flow of making FC

Table 3. Mix proportion of foamed concrete

Mix	Density kg/m ³	Cement kg/m ³	PSBE kg/m ³	Sand kg/m ³	Water kg/m ³	Foam kg/m ³
FC	1600	535.9	–	803.8	270.9	250
PFC	1600	375.1	160.8	803.8	280	250

3. Testing method

3.1. Compression strength test

This present research has prepared 100×100×100 mm cube specimens for compression testing of FC followed by ASTM C513-11 [46] to determine the compressive strength of FC. All specimens were cured and tested at 7 days, 28 days, 3 months, 6 months and 1 year. The average compressive strength and maximum load are obtained by three specimens tested. The compression test was performed using a 2000 kN UTM machine with a loading rate of 3 kN/s. The compressive strength, σ , was calculated by using Equation (3.1).

$$(3.1) \quad \sigma = \frac{P}{A}$$

where: σ – the compressive strength of concrete, P – the maximum load applied, A – cross sectional area.

3.2. Porosity test

The porosity test set-up was prepared as shown in Fig. 3 according to ASTM C642-13 [26]. The cube specimens have been prepared, cured and tested due to the curing

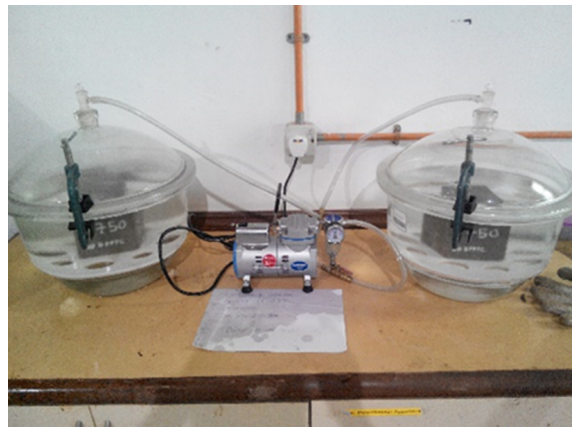


Fig. 3. Porosity test set up

age. The average porosity of FC is obtained by three specimens tested. The porosity was calculated by using Equation (3.2).

$$(3.2) \quad P = \left(\frac{m_{\text{sat}} - m_{\text{dry}}}{m_{\text{sat}} - m_w} \right) \times 100\%$$

where: P – is the porosity in %, m_{sat} – mass of saturated specimen in gram, m_{dry} – mass of the oven dry specimen in gram, m_w – apparent mass in water/buoyancy of specimen in gram.

3.3. RCPT test

The Rapid Chloride Permeability Test (RCPT) was set up according to ASTM C1202-19 [33]. The RCPT was done to investigate the ability of specimens to resist chloride ion penetration by measuring the electrical current passing through a specimen for a period of standard 6 hours at a standard voltage of 60VDC. The specimen's cylinder diameter 100 × 200 mm height was prepared and cured in water curing for 1 year. Fig. 4 shows the equipment, accessories, and the setting up for the Rapid Chloride Permeability Test.



Fig. 4. Rapid Chloride Permeability Test set up

4. Results and discussion

4.1. Compression strength

Fig. 5 and Fig. 6 show compressive strength development for foamed concrete (FC) and foamed concrete containing 30% PSBE as partial cement replacement (PFC) specimen due to different curing conditions for up to 1 year. It clearly shows that the compressive strength development trend increases from 7 days to 365 days of curing age for both FC and

PFC subjected to different curing conditions. The growing trend of compressive strength was due to the hydration process that promotes the continuing production of CSH gel due to the reaction of cement and water subjected to curing conditions. Based on results, the average compressive strength of FC was a range between (5.3 MPa to 7.8 MPa), (7.5 MPa to 10.5 MPa), (8.2 MPa to 11.4 MPa), (8.5 MPa to 12 MPa), and (8.7 MPa to 12.2 MPa) at 7 days, 28 days, 90 days, 180 days and 365 days while the results for PFC with 30% PSBE was a range between (10.8 MPa to 14.9 MPa), (18 MPa to 24 MPa), (19.8 MPa to 26.2 MPa), (20.8 MPa to 27.5 MPa) and (21.4 MPa to 28.1 MPa) at 7 days, 28 days, 90 days, 180 days and 365 days. Compared to control FC, the PFC shows the higher compressive strength subjected to all curing conditions, as shown in Fig. 6. This result was the effect of the pozzolanic reaction of PSBE, where the chemical reaction of the PFC specimen had developed a strong particle bond between PSBE and gel matrix to increase the compressive strength. The incorporating PSBE in FC produced higher compressive

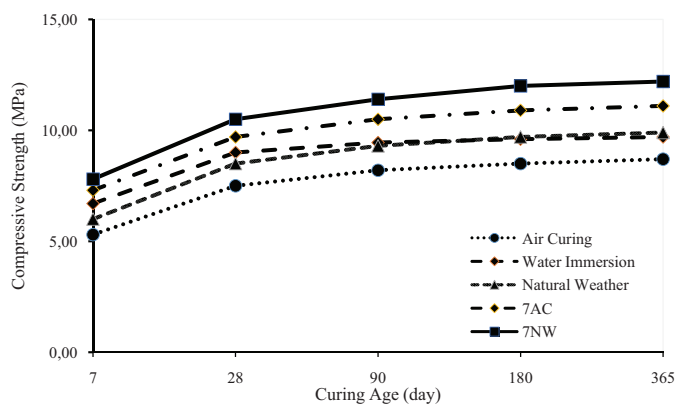


Fig. 5. Development of compressive strength for FC specimen up to 1-year age

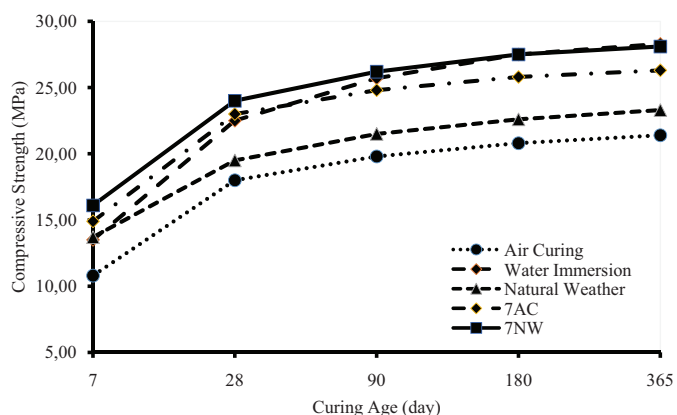


Fig. 6. Development of compressive strength for PFC specimen up to 1-year age

strength than FC because PSBE has a positive effect in generating more calcium silica hydrate due to its higher silica and alumina. On the other hand, PFC is denser than FC because it has fewer voids due to the pozzolanic effect, which more CSH produced denser specimens since FC is a porous structure. A similar influence of pozzolan material on the strength of foamed concrete was reported by [17, 47–51].

On the other hand, the compressive strength of PFC was 56% higher than FC at 28 days subjected to 7 NW due to the curing condition. It should be noted that the 7 days of initial water curing seemed to produce early hydration and led to increased strength development of foamed concrete. Yetgin & Çavdar [52] also found that a combination of water and air curing methods increases the strength of foamed concrete as the ages increase, which leads to the achievement of the ultimate strength. Similarly, Rahman [53] reported that cured in water following cured in air produces higher strength than a specimen cured in water or air exclusively. According to Falade et al. [54], the lower strength exhibited by water-cured specimens might be due to the dilation of cement gel by the adsorbed water, which reduces the forces of cohesion of the solid particles. Also, based on the result obtained, the compressive strength cured in 7 AC was 4% lower than 7 NW, which can also be the suitable curing condition due to sufficient moisture maintained to continue the hydration of cement.

As mentioned earlier, results indicate that 30% PSBE significantly improved the strength of PFC compared to control FC cured in 7 NW curing, which specimen has been 7 days of initial water immersion and then followed by natural weather to achieve the highest strength compared to others. It is proven that, by 7 days of initial water curing, it has produced early hydration and increased strength compared to other specimens cured in different conditions. The microstructure of the specimen PFC and FC for 28 days and 1 year subjected to 7 NW were observed by SEM morphology in Fig. 7 and Fig. 8, respectively. The formation of hydration products like calcium hydroxide (CH) and calcium silicate hydrate (CSH) are presented in SEM morphology. From observation, the inclusion of PSBE has led to pozzolanic reaction resulting in the production of more CSH gel and blocking the voids in the PFC, making PFC denser and more robust. The SEM morphology has revealed that PSBE improves the internal structure of PFC and makes it denser than the control FC specimen. Fig. 7 shows the effect of PSBE, where the crowded tiny of cotton shaped represent the additional CSH in the PFC is more than control FC for 28 days. On the other hand, fewer CH crystals that have been presented by hexagonal plate and more CSH leads to its greater strength.

Fig. 8 shows that the tiny cotton appeared more in PFC due to age of curing increases, representing CSH formation in the hardened specimen. It revealed that the inclusion of PSBE gained more CSH due to the pozzolanic effect. Furthermore, the excellent effect of PSBE has to make PFC denser, which leads to greater strength compared to FC specimen. Besides, a few tiny cotton-shaped pieces appear in the FC specimen because CaO in FC generates CH, and since there is no pozzolanic effect, the CH cannot consume. Similar researches [48, 55] reported that incorporating pozzolan materials in FC provides more CSH, leading to higher compressive strength. The excellent effect of pozzolan materials is due to the reaction with the CH, which produces more CSH during the pozzolanic

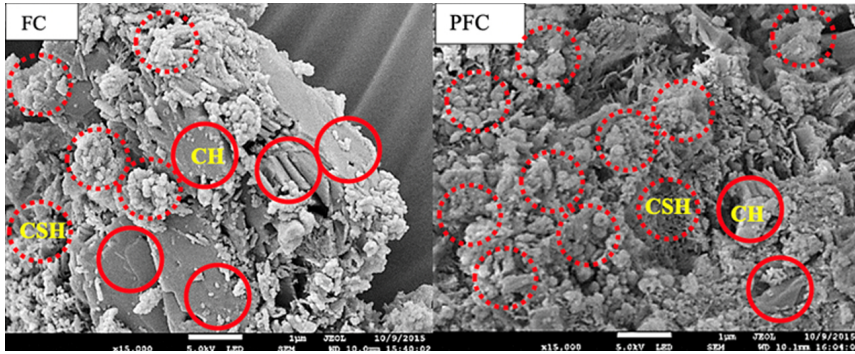


Fig. 7. SEM for hydration product of FC and PFC at 28 days (7 NW curing)

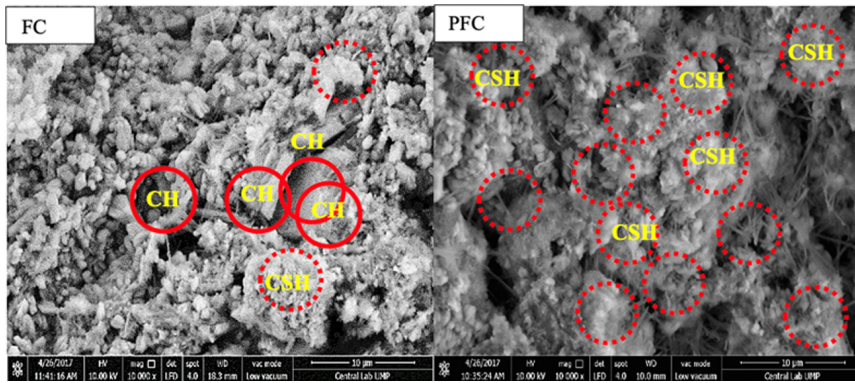


Fig. 8. SEM for hydration product of FC and PFC at 1 year (7 NW curing)

reaction [56, 57]. This mechanism is similar to concrete or mortar incorporating pozzolan materials, which their hardened concrete is denser and less porous due to the formation of CSH during the pozzolanic effect [58–60].

4.2. Porosity

The porosity of foamed concrete incorporating 30% PSBE (PFC) and control specimen FC was shown in Fig. 9 and Fig. 10. From the graph, it can be seen that both FC and PFC specimens cured in 7 NW (which is 7 days water immersion and then followed by natural weather) presented the lowest porosity compared to others. The lowest porosity was between 21.5% to 12.5% at 7 to 365 days for FC and 13% to 6.9% at 7 to 365 days for PFC. Meanwhile, the highest porosity result was observed in air curing in the range between 29.2% to 21.5% at 7 to 365 days for FC and 18.2% to 12.8% at 7 to 365 days for PFC. It discovered that the porosity trend decreased due to curing age increasing from 7 days up to 1 year for both FC and PFC specimens. The decreasing porosity trend indicates the reduction of pore space within the paste due to the hydration process that promotes the

continuing production of CSH gel. It is observed that the porosity of the specimen produced by PFC was in the range of 45% lower than FC at every age of all curing conditions. It confirmed that the excellent effect of incorporating PSBE in PFC decreased the porosity compared to that control specimen FC. It consistently revealed that the 7NW curing is the effective method to reactivate pozzolan in the hydration process and significantly reduce the porosity. The high porosity in FC corresponds to the larger volume of air voids or pore space in the concrete making it less dense.

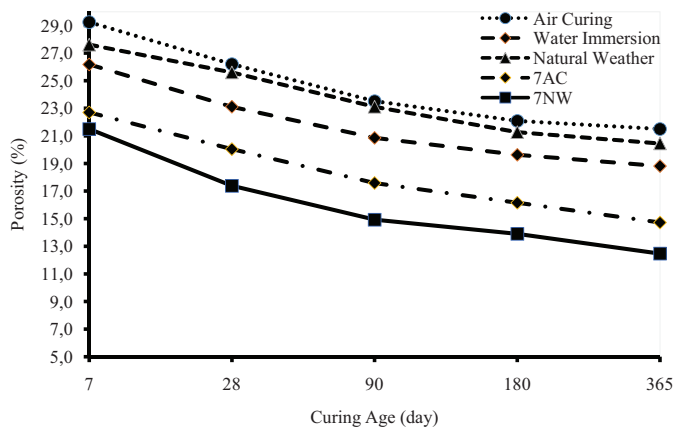


Fig. 9. Porosity of FC

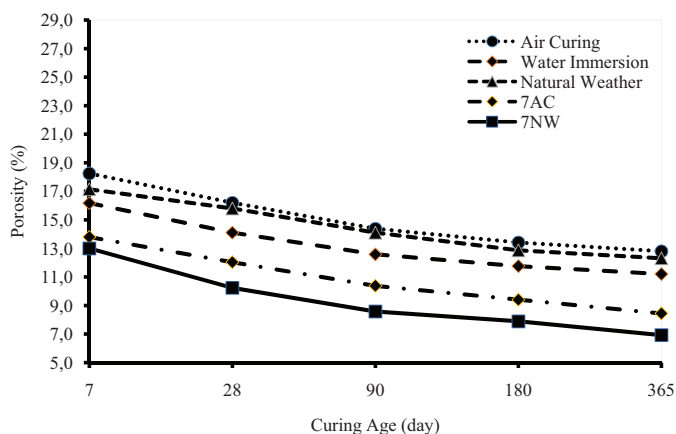


Fig. 10. Porosity of PFC

According to Yang & Song [31], the porosity of foamed concrete containing GGBS was decreased due to the fineness of GGBS and the denser surface. The particle size of pozzolan can reduce the volume of void space between cement and fine aggregate [61]. It confirmed that the porosity of PFC was decreased because the fineness of PSBE effectively blocks

the pores and enhances the durability. Also, in the pozzolanic reaction, by combining the PSBE with the calcium hydroxide (CH) producing the additional CSH gel, CSH will close the voids and make the foamed concrete denser and more durable. Walker & Pavía [62] recommended that the particle size of pozzolan should be finer than cement to achieve better performance in porosity. As Kearsley & Wainwright [30], the lower porosity indicated, the fewer pores connected that make the strength higher, low water absorption and permeability and frost resistance will be better but higher in thermal conductivity.

4.3. Rapid chloride penetration

This study reported the performance of PFC and FC specimens towards chloride ion penetration by determining the amount of charge electrical current passing through a specimen for a period of standard 6 hours at a standard voltage of 60VDC in terms of Coulombs. The lower charge value represents the excellent resistance towards chloride ion penetration and lower permeability. The total charge of chloride ions in coulombs for PFC and FC specimens was presented in Fig. 11. According to the results, the charge in coulombs that passes through the specimen of FC was higher than PFC. Consistently, it shows that the excellent effect of incorporating PSBE has lower the chloride ion permeability than control FC. Furthermore, the rapid chloride ion permeability trend of PFC decreased due to the curing age from 7 days up to 1 year. Referring to ASTM C 1202-19 [33], the foamed concrete incorporating 30% PSBE was considered low moderate permeability based on its charge coulombs value less than 4000. While the control FC was classified as higher permeability based on its ion permeability above 4000 coulombs from 7 days up to 1 year.

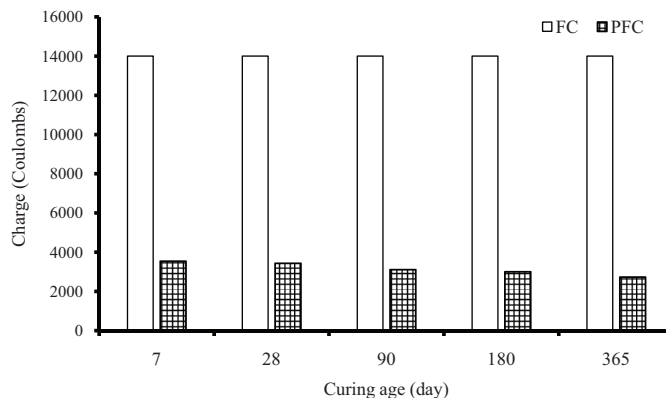


Fig. 11. Rapid chloride permeability of FC and PFC

The high chloride ion permeability in FC indicates low chloride resistance because the current quickly passes through the specimen, corresponding to the larger volume of air voids or pore space within the internal cell structure that makes it less dense. While the reduction in the chloride ion permeability in the PFC indicates that reduction of capillary pores and connectivity due to the particle size of PSBE, which is finer than cement, caused a better

particle packing and led to a denser harden phase. The use of PSBE as a replacement for cement is highly effective in improving foamed concrete's resistance. It caused a significant reduction of chloride ion permeability in PFC due to reducing pore space within the paste. Hossain et al. [63] reported that the pozzolans in mortar and concrete improved rapid chloride ion permeability resistance. Further, as mentioned earlier, the rapid chloride ion permeability with the PSBE trend was decreased as the curing period increased from 7 days to 365 days of curing age compared to FC. Besides the pozzolanic materials can be more effective in improving concrete durability due to pozzolanic reaction continuing at a higher rate for a more extended period [35].

5. Conclusions

Incorporating PSBE in foamed concrete generates superior compressive strength, porosity, and chloride permeability. The findings of this study reveal many beneficial effects of PSBE in foamed concrete from exterior to interior hydrated compounds. The specimen subjected to 7 days of initial water immersion followed by natural weather curing is the effective method to reactivate pozzolan in the hydration process. The PFC exhibited higher compressive strength and durability with 45% lower porosity. Regarding chloride penetration, foamed concrete with 30% PSBE is classified as low, moderate permeability, and FC as higher permeability based on its charge coulombs value of more than 4000. In conclusion, incorporating PSBE in foamed concrete as a replacement for cement enhances the compressive strength, porosity, and chloride permeability. In the future, an investigation of the structural performance containing PSBE with other pozzolan ash should be conducted.

Acknowledgements

This study was supported by the Malaysian Ministry of Higher Education and University Malaysia Pahang under the research grant (RDU/UMP) vote number RDU200349.

References

- [1] R. Othman, et al., "Evaluation of the sulphate resistance of foamed concrete containing processed spent bleaching earth", *European Journal of Environmental and Civil Engineering*, 2020, DOI: [10.1080/19648189.2020.1809526](https://doi.org/10.1080/19648189.2020.1809526).
- [2] S.K. Loh, K.Y. Cheong, J. Salimon, "Surface-active physicochemical characteristics of spent bleaching earth on soil-plant interaction and water-nutrient uptake: A review", *Application Clay Science*, 2017, vol. 140, pp. 59–65.
- [3] C. Meziti, A. Boukerroui, "Regeneration of a solid waste from an edible oil refinery", *Ceramics International*, 2011, vol. 37, no. 6, pp. 1953–1957, DOI: [10.1016/j.ceramint.2011.02.016](https://doi.org/10.1016/j.ceramint.2011.02.016).
- [4] D. Eliche-Quesada, F.A. Corpas-Iglesias, "Utilisation of spent filtration earth or spent bleaching earth from the oil refinery industry in clay products", *Ceramics International*, 2014, vol. 40, no. 10, pp. 16677–16687, DOI: [10.1016/j.ceramint.2014.08.030](https://doi.org/10.1016/j.ceramint.2014.08.030).

- [5] Y.P. Huang, J.I. Chang, "Biodiesel production from residual oils recovered from spent bleaching earth", *Renewable Energy*, 2010, vol. 35, no. 1, pp. 269–274, DOI: [10.1016/j.renene.2009.07.014](https://doi.org/10.1016/j.renene.2009.07.014).
- [6] A. Beshara, C.R. Cheeseman, "Reuse of spent bleaching earth by polymerisation of residual organics", *Waste Management*, 2014, vol. 34, no. 10, pp. 1770–1774, DOI: [10.1016/j.wasman.2014.04.021](https://doi.org/10.1016/j.wasman.2014.04.021).
- [7] C. Sangiorgi, P. Tataranni, A. Simone, V. Vignali, C. Lantieri, G. Dondi, "Waste bleaching clays as fillers in hot bituminous mixtures", *Construction and Building Materials*, 2014, vol. 73, pp. 320–325, DOI: [10.1016/j.conbuildmat.2014.09.076](https://doi.org/10.1016/j.conbuildmat.2014.09.076).
- [8] P. Nalobile, *Investigation of the Pyroprocessing and the Optimum Mix Ratio of Rice Husks, Broken Bricks and Spent Bleaching Earth to Make Pozzolan Cement*. Kenyatta University, 2014.
- [9] D. Aldridge, "Introduction to foamed concrete: what, why, how?" in: *Proceeding from the int. Conference Global Construction: Ultimate concrete opportunities, Dundee. 5-7 July 2005*. Thomas Telford, 2005, pp. 1–14.
- [10] R.K. Dhir, M. Newlands, A. McCarthy, *Ultimate Concrete Opportunities*. Thomas Telford, 2005.
- [11] M.R. Jones, A. McCarthy, "Preliminary views on the potential of foamed concrete as a structural material", *Magazine of Concrete Research*, 2005, vol. 57, no. 1, pp. 21–31, DOI: [10.1680/macrc.2005.57.1.21](https://doi.org/10.1680/macrc.2005.57.1.21).
- [12] A.O. Richard, M.B. Ramli, "A Qualitative Study of Green Building Indexes Rating of Lightweight Foam Concrete", *Journal of Sustainable Development*, 2001, vol. 4, no. 5, pp. 188–195, DOI: [10.5539/jsd.v4n5p188](https://doi.org/10.5539/jsd.v4n5p188).
- [13] A. Richard, "Experimental Production of Sustainable Lightweight Foamed Concrete", *British Journal of Applied Science & Technology*, 2013, vol. 3, no. 4, pp. 994–1005.
- [14] R. Bayuaji, "The Influence of Microwave Incinerated Rice Husk Ash on Foamed Concrete Workability and Compressive Strength Using Taguchi Method", *Jurnal Teknologi*, 2015, vol. 75, no. 1, pp. 265–274, DOI: [10.11113/jt.v75.3804](https://doi.org/10.11113/jt.v75.3804).
- [15] E.P. Kearsley, P. Wainwright, "the Effect of fly ash content on the compressive strength development of concrete", *Cement and Concrete Research*, 2001, vol. 31, no. 31, pp. 105–112.
- [16] M.R. Jones, A. McCarthy, "Utilising unprocessed low-lime coal fly ash in foamed concrete", *Fuel*, 2005, vol. 84, no. 11, pp. 1398–1409, DOI: [10.1016/j.fuel.2004.09.030](https://doi.org/10.1016/j.fuel.2004.09.030).
- [17] C. Bing, W. Zhen, L. Ning, "Experimental Research on Properties of High-Strength Foamed Concrete", *Journal of Materials in Civil Engineering*, 2012, vol. 24, no. 1, pp. 113–118, DOI: [10.1061/\(ASCE\)MT.1943-5533.0000353](https://doi.org/10.1061/(ASCE)MT.1943-5533.0000353).
- [18] H. Awang, A.O. Mydin, A.F. Roslan, "Microstructural Investigation of Lightweight Foamed Concrete Incorporating Various Additives", *International Journal of Academic Research*, 2012, vol. 4, no. 2, pp. 196–200.
- [19] K.S. Wang, I.J. Chiou, C.H. Chen, D. Wang, "Lightweight properties and pore structure of foamed material made from sewage sludge ash", *Construction and Building Materials*, 2005, vol. 19, no. 8, pp. 627–633, DOI: [10.1016/j.conbuildmat.2005.01.002](https://doi.org/10.1016/j.conbuildmat.2005.01.002).
- [20] C.G. Puttappa, V. Rudresh, I. Azmi, K.U. Muthu, H.S. Raghavendra, "Mechanical Properties of Foamed concrete", in *International Conference on Construction and Technology*. 2008, pp. 491–500.
- [21] F. Q. Zhao, J. Q. Liu, Q. Li, H. Li, "Study of Foamed Concrete from Activated Ash/Slag Blended Cement", *Advanced Materials Research*, 2010, vol. 160–162, pp. 821–826, DOI: [10.4028/www.scientific.net/AMR.160-162.821](https://doi.org/10.4028/www.scientific.net/AMR.160-162.821).
- [22] S.H. Wang, "Preparation of Foam Concrete from Graphite Tailing", *Advanced Materials Research*, 2011, vol. 356–360, pp. 1994–1997, DOI: [10.4028/www.scientific.net/AMR.356-360.1994](https://doi.org/10.4028/www.scientific.net/AMR.356-360.1994).
- [23] S.K. Lim, C.S. Tan, O.Y. Lim, Y.L. Lee, "Fresh and hardened properties of lightweight foamed concrete with palm oil fuel ash as filler", *Construction Building Materials*, 2013, vol. 46, pp. 39–47, DOI: [10.1016/j.conbuildmat.2013.04.015](https://doi.org/10.1016/j.conbuildmat.2013.04.015).
- [24] U. Johnson Alengaram, B.A. Al Muhit, M.Z. bin Jumaat, M.L.Y. Jing, "A comparison of the thermal conductivity of oil palm shell foamed concrete with conventional materials", *Materials & Design*, 2013, vol. 51, pp. 522–529, DOI: [10.1016/j.matdes.2013.04.078](https://doi.org/10.1016/j.matdes.2013.04.078).
- [25] M. Cong, C. Bing, "Properties of a foamed concrete with soil as filler", *Construction Building Materials*, 2015, vol. 76, pp. 61–69, DOI: [10.1016/j.conbuildmat.2014.11.066](https://doi.org/10.1016/j.conbuildmat.2014.11.066).

- [26] ASTM C642-13 *Standard Test Method for Density, Absorption, and Voids in Hardened Concrete*. ASTM International, West Conshohocken, PA, 2013.
- [27] E.P. Kearsley, P.J. Wainwright, "The effect of porosity on the strength of foamed concrete", *Cement and Concrete Research*, 2002, vol. 32, no. 2, pp. 233–239, DOI: [10.1016/S0008-8846\(01\)00665-2](https://doi.org/10.1016/S0008-8846(01)00665-2).
- [28] E.P. Kearsley, P.J. Wainwright, "Ash content for optimum strength of foamed concrete", *Cement and Concrete Research*, 2002, vol. 32, no. 2, pp. 241–246, DOI: [10.1016/S0008-8846\(01\)00666-4](https://doi.org/10.1016/S0008-8846(01)00666-4).
- [29] E.K.K. Nambiar, K. Ramamurthy, "Air-void characterisation of foam concrete", *Cement and Concrete Research*, 2007, vol. 37, no. 2, pp. 221–230, DOI: [10.1016/j.cemconres.2006.10.009](https://doi.org/10.1016/j.cemconres.2006.10.009).
- [30] E.P. Kearsley, P.J. Wainwright, "Porosity and permeability of foamed concrete", *Cement and Concrete Research*, 2001, vol. 31, no. 5, pp. 805–812, DOI: [10.1016/S0008-8846\(01\)00490-2](https://doi.org/10.1016/S0008-8846(01)00490-2).
- [31] K.-H. Yang, J.-K. Song, "Workability Loss and Compressive Strength Development of Cementless Mortars Activated by Combination of Sodium Silicate and Sodium Hydroxide", *Journal of Materials in Civil Engineering*, 2009, vol. 21, no. 3, pp. 119–127, DOI: [10.1061/\(ASCE\)0899-1561\(2009\)21:3\(119\)](https://doi.org/10.1061/(ASCE)0899-1561(2009)21:3(119)).
- [32] F.M. Lea, *Lea's Chemistry of Cement and Concrete*, 4th ed. Butterworth-Heinemann, 2003.
- [33] ASTM C1202-19 *Standard Test Method for Electrical Indication of Concrete's Ability to Resist Chloride Ion Penetration*. ASTM International, West Conshohocken, PA, 2019.
- [34] M. Dobiszewska, A. Beycioğlu, "Physical Properties and Microstructure of Concrete with Waste Basalt Powder Addition", *Materials (Basel)*, 2020, vol. 13, no. 16, art. ID 3503, DOI: [10.3390/ma13163503](https://doi.org/10.3390/ma13163503).
- [35] L. Tang, L.-O. Nilsson, P.A.M. Basheer, *Resistance of Concrete to Chloride Ingress*. CRC Press, 2011.
- [36] O. Sengul, M.A. Tasdemir, "Compressive Strength and Rapid Chloride Permeability of Concretes with Ground Fly Ash and Slag", *Journal of Materials in Civil Engineering*, 2009, vol. 21, no. 9, pp. 494–50, DOI: [10.1061/\(ASCE\)0899-1561\(2009\)21:9\(494\)](https://doi.org/10.1061/(ASCE)0899-1561(2009)21:9(494)).
- [37] O.H. Li, et al., "Evaluation of the effect of silica fume on amorphous fly ash geopolymers exposed to elevated temperature", *Magnetochemistry*, 2021, vol. 7, no. 1, pp. 1–14, DOI: [10.3390/magnetochemistry7010009](https://doi.org/10.3390/magnetochemistry7010009).
- [38] P. Sudha, R. Selvaraj, T. Palanisamy, "Intensification of calcined clay as a pozzolanic material in cement mortar", *International Journal of Applied Engineering Research*, 2015, vol. 10, no. 15, pp. 35640–35644.
- [39] ASTM C796/C796M-19 *Standard Test Method for Foaming Agents for Use in Producing Cellular Concrete Using Preformed Foam*. ASTM International, West Conshohocken, PA, USA, 2019.
- [40] ASTM C869/C869M-11 *Standard Specification for Foaming Agents Used in Making Preformed Foam for Cellular Concrete*. ASTM International, West Conshohocken, PA, USA, 2016.
- [41] BS EN 12620 *Aggregates for Concrete*. British Standard Institute, Brussels, 2002.
- [42] ASTM C618-19 *Standard Specification for Coal Fly Ash and Raw or Calcined Natural Pozzolan for Use in Concrete*. ASTM International, West Conshohocken, PA, USA, 2019.
- [43] EN 12390-3:2019 *Testing hardened concrete - Part 3: Compressive strength of test specimens*. 2019.
- [44] R. Othman, et al., "Relation between density and compressive strength of foamed concrete", *Materials (Basel)*, 2021, vol. 14, no. 11, DOI: [10.3390/ma14112967](https://doi.org/10.3390/ma14112967).
- [45] E. Yunus, H. Asrah, A.N. Rizalman, "Compressive Strength of Eco-Processed Pozzolan Concrete under Chloride and Sulphate Exposure", *Journal of Advanced Research in Applied Mechanics*, 2019, vol. 59, no. 1, pp. 1–9.
- [46] ASTM C513/C513M-11e1 *Standard Test Method for Obtaining and Testing Specimens of Hardened Lightweight Insulating Concrete for Compressive Strength*. ASTM International, West Conshohocken, PA, USA, 2011.
- [47] A.S. Tarasov, E.P. Kearsley, A.S. Kolomatskiy, H.F. Mostert, "Heat evolution due to cement hydration in foamed concrete", *Magazine of Concrete Research*, 2010, vol. 62, no. 12, pp. 895–906, DOI: [10.1680/mac.2010.62.12.895](https://doi.org/10.1680/mac.2010.62.12.895).
- [48] A.A. Hilal, N.H. Thom, A.R. Dawson, "On void structure and strength of foamed concrete made without/with additives", *Construction and Building Materials*, 2015, vol. 85, pp. 157–164, DOI: [10.1016/j.conbuildmat.2015.03.093](https://doi.org/10.1016/j.conbuildmat.2015.03.093).
- [49] E.P. Kearsley, P.J. Wainwright, "The effect of high fly ash content on the compressive strength of foamed concrete", *Cement and Concrete Research*, 2001, vol. 31, no. 1, pp. 105–112, DOI: [10.1016/S0008-8846\(00\)00430-0](https://doi.org/10.1016/S0008-8846(00)00430-0).

- [50] H. Awang, M.Z. Al-Mulali, H.P.S. Abdul Khalil, Z.S. Aljoumaly, "Utilisation of Oil Palm Ash in Foamed Concrete", *MATEC Web Conference*, 2014, vol. 15, art. ID 01033, DOI: [10.1051/mateconf/20141501033](https://doi.org/10.1051/mateconf/20141501033).
- [51] A. Munir, Abdullah, Huzaim, Sofyan, Irfandi, Safwan, "Utilization of Palm Oil Fuel Ash (POFA) in Producing Lightweight Foamed Concrete for Non-structural Building Material", *Procedia Engineering*, 2015, vol. 125, pp. 739–746, DOI: [10.1016/j.proeng.2015.11.119](https://doi.org/10.1016/j.proeng.2015.11.119).
- [52] Ş. Yetgin, A. Çavdar, "Study of Effects of Natural Pozzolan on Properties of Cement Mortars", *Journal of Materials in Civil Engineering*, 2006, vol. 18, no. 6, pp. 813–816, DOI: [10.1061/\(ASCE\)0899-1561\(2006\)18:6\(813\)](https://doi.org/10.1061/(ASCE)0899-1561(2006)18:6(813)).
- [53] A.M.B.A. Rahman, "Strength Development of Foamed Concrete", *Materials Science*, 2014, pp. 1–7.
- [54] F. Falade, E. Ikonmwoosa, C. Fapohunda, "A Study on the Compressive and Tensile Strength of Foamed Concrete Containing Pulverized Bone as a Partial Replacement of Cement", *Pakistan Journal of Engineering and Applied Sciences*, 2013, vol. 13, pp. 82–93.
- [55] X.G. Yu, et al., "Microstructure, Mineral Phases and Strength of the Foam Concrete", *Key Engineering Materials*, 2011, vol. 492, pp. 484–488, DOI: [10.4028/www.scientific.net/KEM.492.484](https://doi.org/10.4028/www.scientific.net/KEM.492.484).
- [56] M. Karim, M. Hossain, M. Khan, M. Zain, M. Jamil, F. Lai, "On the Utilization of Pozzolanic Wastes as an Alternative Resource of Cement", *Materials (Basel)*, 2014, vol. 7, no. 12, pp. 7809–7827, DOI: [10.3390/ma7127809](https://doi.org/10.3390/ma7127809).
- [57] C. Krämer, T.L. Kowald, R.H.F. Trettin, "Pozzolanic hardened three-phase-foams", *Cement and Concrete Composites*, 2015, vol. 62, pp. 44–51, DOI: [10.1016/j.cemconcomp.2015.06.002](https://doi.org/10.1016/j.cemconcomp.2015.06.002).
- [58] J. Stark, "Recent advances in the field of cement hydration and microstructure analysis", *Cement and Concrete Research*, 2011, vol. 41, no. 7, pp. 666–678, DOI: [10.1016/j.cemconres.2011.03.028](https://doi.org/10.1016/j.cemconres.2011.03.028).
- [59] W. Wongkeo, A. Chaipanich, "Compressive strength, microstructure and thermal analysis of autoclaved and air cured structural lightweight concrete made with coal bottom ash and silica fume", *Materials Science and Engineering*, 2010, vol. 527, no. 16–17, pp. 3676–3684, DOI: [10.1016/j.msea.2010.01.089](https://doi.org/10.1016/j.msea.2010.01.089).
- [60] R.P. Jaya, B.H.A. Bakar, M.A.M. Johari, M.H. W. Ibrahim, M.R. Hainin, D.S. Jayanti, "Strength and microstructure analysis of concrete containing rice husk ash under seawater attack by wetting and drying cycles", *Advanced in Cement Research*, 2014, vol. 26, no. 3, pp. 145–154, DOI: [10.1680/adcr.13.00010](https://doi.org/10.1680/adcr.13.00010).
- [61] A.N. Givi, S.A. Rashid, F.N.A. Aziz, M.A.M. Salleh, "Contribution of Rice Husk Ash to the Properties of Mortar and Concrete: A Review", *Journal of American Science*, 2010, vol. 6, no. 3, pp. 157–165.
- [62] R. Walker, S. Pavía, "Physical properties and reactivity of pozzolans, and their influence on the properties of lime–pozzolan pastes", *Materials and Structures*, 2011, vol. 44, no. 6, pp. 1139–1150, DOI: [10.1617/s11527-010-9689-2](https://doi.org/10.1617/s11527-010-9689-2).
- [63] M.M. Hossain, M.R. Karim, M.K. Hossain, M.N. Islam, M.F.M. Zain, "Durability of mortar and concrete containing alkali-activated binder with pozzolans: A review", *Construction and Building Materials*, 2015, vol. 93, pp. 95–109, DOI: [10.1016/j.conbuildmat.2015.05.094](https://doi.org/10.1016/j.conbuildmat.2015.05.094).

Received: 16.12.2021, Revised: 08.02.2022