

SEKOLAH KEBANGSAAN BATU TIGA PORTAL

MUHAMAD NOR ZAKWAN BIN CHE ALI

**THESIS SUBMITTED IN FULFILMENT OF THE BACHELOR OF COMPUTER
SCIENCE (SOFTWARE ENGINEERING)**

FACULTY OF COMPUTER SYSTEM & SOFTWARE ENGINEERING

UNIVERSITI MALAYSIA PAHANG

2014

Abstract

Previously, Sekolah Kebangsaan Batu Tiga has had the school system, the system is developed using Joomla as a platform for information about the school and also delivers information. However, the system did not last long when having problems and the system is already removed by the school.

Besides that, the selected web-based application system to establish Sekolah Kebangsaan Batu Tiga. This is one of the website that also provides information from a variety of sources and it is also a process to simplify every management of the school. The system uses a technique of waterfall model as the implementation steps to complete the portal system. Besides that, the portal has two types which users and user admin the different character, user as the reader information and admin as the person in charge of portal. The system used software Adobe Dreamweaver as the programming language and MySQL as the database for the system.

Abstract

Berdasarkan maklumat sebelum ini Sekolah Kebangsaan Batu Tiga telah mempunyai sistem sekolah, Sistem tersebut dibangunkan dengan menggunakan perisian Joomla sebagai landasan untuk menyampaikan maklumat dan informasi tentang sekolah. Akan tetapi, system tersebut tidak bertahan lama apabila mengalami masalah dan system tersebut sudah dihapuskan oleh pihak sekolah.

Sehubungan dengan itu system aplikasi berasaskan web dipilih bagi menubuhkan portal sekolah kebangsaan batu tiga. Ini merupakan salah satu laman web yang turut menyediakan maklumat dari pelbagai sumber dan ia juga merupakan proses untuk memudahkan setiap pengurusan pihak sekolah. Sistem ini menggunakan teknik model air terjun sebagai langkah-langkah pelaksanaan untuk menyiapkan system portal. Selain itu, portal ini mempunyai dua pengguna iaitu admin dan pengguna yang berlainan karekter, pengguna sebagai pembaca information dan admin sebagai pihak yang bertanggungjawab bagi portal. Sistem ini menggunakan software Adobe Dreamweaver sebagai bahasa pengaturcaraan dan MySQL sebagai pangkalan data untuk system ini.

List of Tables

| Table | Number | Page |
|--------------|---|-------------|
| 2.1 | Hardware Interfaces | 16 |
| 2.2 | Software Interfaces | 17 |
| 2.3 | Use Case Description for Log In | 21 |
| 2.4 | Use Case Description for View Information | 24 |
| 2.5 | Use Case Description for Give Feedback | 27 |
| 2.6 | Use Case Description for Manage Information | 30 |
| 2.7 | Use Case Description for Manage Feedback | 33 |
| 2.8 | Admin Entity | 36 |
| 2.9 | User Entity | 36 |
| 2.10 | Login with different users | 39 |
| 2.11 | Upload news or activities | 40 |
| 2.12 | Upload announcements | 40 |
| 2.13 | Upload pictures | 41 |
| 2.14 | Upload picture folders | 41 |
| 2.15 | Upload Notes | 42 |
| 2.16 | Hardware Requirement | 43 |
| 2.17 | Software Requirement | 43 |

List of Figures

| Figure | Number | Page |
|---------------|--|-------------|
| 1.1 | Portal Rasmi SMK Bandar Penawar. | 4 |
| 1.2 | The official Portal Rasmi Sekolah Kebangsaan Sungai Rokam. | 6 |
| 1.3 | The official Portal Sekolah Kebangsaan Seri Bintang Utara | 8 |
| 1.4 | Waterfall model | 10 |
| 1.5 | Interface of Adobe Dreamweaver CS6 | 12 |
| 1.6 | Main Interface of MySQL | 13 |
| 2.1 | System Interfaces | 15 |
| 2.2 | Context Diagram | 16 |
| 2.3 | UML Use Case Diagram | 20 |
| 2.4 | Activity Diagram for log in | 22 |
| 2.5 | Sequence Diagram for Login | 23 |
| 2.6 | Activity Diagram for view information | 25 |
| 2.7 | Sequence Diagram for View Information | 26 |
| 2.8 | Activity Diagram for Give Feedback | 28 |
| 2.9 | Sequence Diagram for Give Feedback | 29 |
| 2.10 | Activity Diagram for Manage Information | 31 |
| 2.11 | Sequence Diagram for Manage Information | 32 |
| 2.12 | Activity Diagram for Manage Feedback | 34 |
| 2.13 | Sequence Diagram for Manage Feedback | 35 |
| 2.14 | The Waterfall Model | 37 |

List of Abbreviations

| No | Acronym/Definition | Description |
|----|--------------------|--|
| 1. | SKBT | Sekolah Kebangsaan Batu Tiga |
| 2. | SMKBP | Sekolah Menengah Kebangsaan Bandar Penawar |
| 3. | SKSR | Sekolah Kebangsaan Sungai Rokam |
| 4. | SKSBU | Sekolah Kebangsaan Sri Bintang Utara |
| 5. | PTA | Parents Teachers And Association |
| 6. | UML | Unified Modeling Language |
| 7. | HTTP | Hypertext Transfer Protocol |
| 8. | ASP | Active Server Page |
| 9. | PHP | Hypertext Preprocessor |

TABLE OF CONTENTS

| PART | TITLE | PAGE |
|-------------|--|-------------|
| | TITLE PAGE | |
| | DECLARATION | ii |
| | SUPERVISOR DECLARATION | iii |
| | ACKNOWLEDGEMENTS | iv |
| | ABSTRACT | v |
| | ABSTRACT | vi |
| | LIST OF TABLES | vii |
| | LIST OF FIGURES | viii |
| | LIST OF ABBREVIATIONS | ix |
| | TABLE OF CONTENTS | x-xi |
| I. | INTRODUCTION | 1 |
| | 1.0 Introduction | 1 |
| | 1.1 Problem Statement for current system | 2 |
| | 1.1.1 Project Background Description. | 2 |
| | 1.1.2 Objective | 3 |
| | 1.2 Review of Previous System and Relationship to Current Project | 3 |
| | 1.2.1 Existing System Description | 3 |
| | 1.2.1.1 Portal Rasmi SMK Bandar Penawar. | 3-4 |
| | 1.2.1.2 Portal Rasmi Sekolah Kebangsaan Sungai Rokam. | 5-6 |
| | 1.2.1.3 The official Portal Sekolah Kebangsaan Seri Bintang Utara. | 7-8 |
| | 1.3 Current System And Its Limitation | 9 |
| | 1.4 Method Of Approach | 10 |
| | 1.4.1 Waterfall Model | 10 |
| | 1.5 Indication Of Scope And Limitation | 11-13 |
| | 1.6 Outline Material Present In Rest Of The Report | 14 |

| | | |
|-------------|---|-----------|
| II. | REPORT BODY | 15 |
| | 2.1 User Requirement | 15 |
| | 2.1.1 Product Perspective | 15 |
| | 2.2 TECHNIQUE/THEORY/MODELLING/FLOW CHART/STORY BOARD | 15 |
| | 2.2.1 System Interface | 15 |
| | 2.2.2 User interfaces | 16 |
| | 2.2.3 Hardware Interface (Client) | 16 |
| | 2.2.4 Software Interface | 17 |
| | 2.2.5 Product Function | 18 |
| | 2.2.5.1 User Characteristic | 18 |
| | 2.2.5.2 Constraints | 18 |
| | 2.2.5.3 Assumption and Dependencies | 19 |
| | 2.2.6 Specific Requirement | 19-36 |
| | 2.3 Method and Material Used | 37 |
| | 2.3.1 Software Development Plan | 37-39 |
| | 2.4 Hardware Requirement | 40 |
| | 2.5 Software Requirement | 40 |
| III. | Conclusion | |
| | 3.1 Conclusion | 41 |
| | 3.2 Significant Contributions Of The Project | 41 |
| | 3.3 Future Work | 41 |
| | REFERENCES | 45 |
| | APPENDICIES | 46 |

INTRODUCTION

1.0 INTRODUCTION

In this revolutionary era of globalization, information and communication technology has grown rapidly and fast around the world. In fact, it is not only caused by information and communication technology, but the whole of society in this world are starting to move more rapidly along with the development of this technology resulting state of the world seem limitless.

The portal is an information system page can be accessed quickly. The portal was guided from the availability of information and communications technology development. Through the development of information technology, created a network between computers that are interconnected. Network concerned with internet terms consecutively be ordered – order electronically, including e-mail, transform file, and communication two way between individual and computer.

In short, it is a portal system that provides the features and functions to identify the users to provide them with the web interface a simple and user customizable the web interface for facilitating to access information and services that are of the primary relevance for interests the users.

For organizations that set up the portal, the system to provides versatile the functions for the organization to organize collections of different, services resources and the various sources of information for dissemination to the many users according to certain privileges, interest and needs. Thus, the main purpose of setting up the portal is for bring extensive information and resources are available from many sources for many users in an effective.

1.1 PROBLEM STATEMENT FOR CURRENT SYSTEM

Nowadays, most of the schools in Malaysia do not use websites for their Portal School. Whereas the usage of blog is more popular for managing the portal schools. They use blog to replace the need of a website to share their information regarding the activities done among the school. For this matter, we suggested on building a portal, so that many benefits can be gained by the staff, teacher and student to avoid information crisis. For example, the school clerk can send an email to the key players of the portal body, instead of using traditional methods such as handwritten mail to invite the parties involved for a meeting. If the clerk insists to use the old method, the letter sent may end up missing during the process of delivery which causes information loss. This will result in the person invited to the meeting to miss that meeting. Hence, by building this website, all the people involved will easily get to know about their current information and share that information among them.

1.1.1 Project Background Description.

Sekolah Kebangsaan Batu Tiga is one of the school under Ministry of Education. As the school is managing the student, teacher and parents. It should gives information to its stake holders. Therefore, a portal is built to enhance the management of education and also increase the use of information technology (IT) for students, teachers and community. The aim of this system is to ease the people to share information by using the provided social networking. This system also provide information about learning system such as past year exam papers and notes for subjects especially for students. Moreover, information service such as practice, tutorial, and post the activities and inform the announcement are also provided.

1.1.2 Objectives

Objectives of the project are as follows:

1. To develop a portal for Sekolah Kebangsaan Batu 3.
2. To provide the Email notification
3. To keep data and information related about School and Parents Teacher and Association

1.2 REVIEW OF PREVIOUS SYSTEM AND RELATIONSHIP TO CURRENT PROJECT

This part will explain more about existing system and related to the current project.

1.2.1 Existing System Description

1.2.1.1 Portal Rasmi SMK Bandar Penawar.

Figure 1.1 shows for Portal Rasmi SMK Bandar Penawar. This system is to provide for information the school, students, parents and the community such as announcements, weekly activities, school teacher on duty and birth date teacher. It also to provide a button follows directly to twitter, Facebook, YouTube.

This kind of system is a bit same with what I am going to develop for my current project. But the systems were founded by using BlogSpot, the lack of this system in terms of color less interesting.

Otherwise about this system, the Order item for irregular also transmitted, this may be due to they are using the provided template by BlogSpot. In addition, the information is displayed too much up to the bottom of the information and the school Logo is also not displayed at the front of the system.

Portal Rasmi SMK Bandar Penawar

RSS feed | Twitter Follow | Facebook

SMK Bandar Penawar 81930 Bandar Penawar, Kota Tinggi, Johor. No. Tel & Fax :
078222210 Email : smkbpjohor@yahoo.com

Laman Utama Profil Sekolah Pentadbiran Asrama Aktiviti Sekolah Lain-Lain Hubungi Kami



MMI
Melindungi Masa Instruksional bagi mencapai peningkatan keberhasilan pembelajaran murid..



MBMMBI
Memartabat Bahasa Melayu dan Memperkukuhkan Bahasa Inggeris.



PPP 2013-2025
Pelaksanaan Pembangunan Pendidikan 2013-2025

Program Solat Hajat Perdana



Tarikh : 26 Sept 2013 (Khamis) Masa : 4.30pm - 9.30pm
Tempat: Masjid Jamek As-Syifa Bandar Penawar
Objektif program solat hajat: - Membentuk kesedaran mendalam tentang kepentingan mengharapkan pertolongan dari Allah s.w.t selepas berusaha untuk mencapai matlamat. - Membentuk modal insan pelajar berteraskan unsur spiritual yang telah terbukti kejayaannya. - Menanam sikap tawakkal dan semangat penghayatan dan...

POSTED BY SMK BANDAR PENAWAR ON 15:55

READ FULL POST



Popular **Terkini** Arkib



Pendaftaran Murid Tingkatan 1 Tahun 2013

Pendaftaran kelas 1 RK - guru kelas Cik Mariam bt Imran Pendaftaran kelas 1 Anggun - guru kelas Pn Norida

Pendaftaran kelas 1 C...



Pendaftaran Pelajar Asrama Tahun 2013
Alam baru pelajar asrama adalah titik permulaan untuk memulakan penghidupan baru bersama rakan baruan bimbingan warden sebagai ibubapa mere...

Tawaran Langganan Surat Khabar Berita Harian/ New Straits Times/ Utusan Malaysia dengan hanya RM1.00
Tawaran langganan ini terbuka kepada semua pelajar

Figure 1.1 Portal Rasmi SMK Bandar Penawar.

1.2.1.2 Portal Rasmi Sekolah Kebangsaan Sungai Rokam.

Figure 1.2 shows for the official Portal of Sekolah Kebangsaan Sungai Rokam. This system is to given information to students, teachers, parents and the community just like help schools, Government web links page, school activities, advertisements, news online, the system also provides a web page such as interactive tutorial subjects, math quiz, tips, clone upsr and organized programs by the school especially to students.

Otherwise about this system, the system still has shortcomings, which lack the most notably is unsatisfactory graphics elements. In addition, the layout used by the system is not fit for one of this webpage, because this system main page too long. Maybe it can be separated from the page to different segments of users. In addition, the design table of this system is also less interesting as it seems to be normal and there are no elements of interactive design.


PORTAL RASMI
Sekolah Kebangsaan Sungai Rokam
 Sederap Langkah, Sehalus Arah
Johor Perak Darul Ridzuan

[Masuk] [Daftar]
"UTAMA" "SOALAN LAZIM" "AKUAN ANDA" "BUKU PELAWAT" "GALERI" "WEBMAIL" "KELIAR"
©KAWES 10 October 2013

MALAYSIA



BAKAT DIDAHULUKAN
PENCAPAIAN DITAMAKAN

Informasi Sekolah

- ↳ Sekolah Sekolah
- ↳ Visi dan Misi
- ↳ Rancangan Sekolah
- ↳ Ciri-ciri Sekolah
- ↳ Dasar Kualiti Sekolah
- ↳ Program Pelanggan
- ↳ Lencana Sekolah
- ↳ Bendera Sekolah
- ↳ Lagu Sekolah
- ↳ Lokasi Sekolah
- ↳ Pemadaman Sekolah
- ↳ JK Kurikulum Sekolah
- ↳ JK Hal Ehwal Murid
- ↳ JK Kokurikulum Sekolah
- ↳ Video SKSR
- ↳ Kembara Antar
- ↳ Dasar Privasi
- ↳ Dasar Keselamatan
- ↳ Aplikasi Terkini SKSR
- ↳ Rancangan Rokam
- ↳ Mantan Guru Besar
- ↳ Info Daripada Guru Besar
- ↳ Kiblat Murid
- ↳ RSS

Logo Moto JPN Perak



PERAK BERTAMBAH DI PUNCAK
KEBERSEKUTUAN

Pautan Web Kerajaan

Agensi Kerajaan

Hasrat Pengarah Pelajaran Negeri Perak

Dalam usaha untuk mencapai sasaran akademik 2013 semua warga pendidik negeri Perak perlu:

1. Meningkatkan band sekolah sekurang-kurangnya 1 band dan sifar band 5, 6 dan 7.
2. Memantapkan keupayaan pentadbir (Kepimpinan Instruksional).
3. Memantapkan pelaksanaan headcount di peringkat SPN, PPD, sekolah dan panitia.
4. Memastikan kelas peperiksaan diajar oleh guru okeyan.
5. Melaksanakan tindakan intervensi mengikut potensi murid.
6. Memanfaatkan khidmat bimbingan daripada Guru Cemerlang.
7. Memperkasa pedagogi guru mata pelajaran kritikal.
8. Menambah bilangan Sekolah Berprestasi Tinggi (SBT), Sekolah Kluster Keceleserlangan (SKK) dan penerima Anugerah Jawaran Baharu (New Deal).
9. Memastikan sekolah berada dalam keadaan kesiapsiagaan.

Majlis Penutupan Bulan Kemerdekaan

Kali ke - 56, Tahun 2013
Sekolah Kebangsaan Sungai Rokam

Tarikh : 23 September 2013 (Isnin)
Masa : 7.30 pagi - 9.30 pagi
Tempat : Dewan SK Sungai Rokam

BERITA DAN MAKLUMAT TERKINI

| MAKLUMAT GURU & STAF | MAKLUMAT MURID | DOWNLOAD |
|--|--|--|
|  <p>SEMUA GURU DAN KAKITANGAN SK SG ROKAM, SILA KEMASUKINIE MAKLUMAT PERIBADI ANDA MENGGUNAKAN APLIKASI SISTEM PENGURUSAN SEKOLAH (SPS)</p>  |  <p>KADIAN PERBUJAN BAHAN DIGITAL DI SEPULU BUKU SELURUH NEGARA TAHUN 2013 CLM-BTP. SEMUA MURID SILA KLIK DI SINI UNTUK MENYIAPKAN SOAL BELAJAR</p> |  <p>BARANA SEKOLAH</p>  <p>BARANA IBU BAPA</p>  <p>TAKWIM PERSEKOLAHAN 2013</p> |

Foto Guru Besar



Pn. Hj. Rohah bt. Abd. Razak

Masa Itu Emas



Waktu Solah

Waktu Solah Kuala Lumpur

5 Zuhriyah 1434

| | |
|---------|---------|
| Subuh | 5:42 AM |
| Syuruq | 6:28 AM |
| Zohor | 1:03 PM |
| Asar | 4:16 PM |
| Maghrib | 7:02 PM |
| Isyak | 8:12 PM |

Menu Keahlian

!!! XP Anda !!!
211.25.212.128



Pelawat

Id Pengguna

Kata Laluan

Masuk

© Dattar

Figure 1.2 The official Portal Rasmi Sekolah Kebangsaan Sungai Rokam.

1.2.1.3 The official Portal Sekolah Kebangsaan Seri Bintang Utara.

Figure 1.3 shows for The Portal Sekolah Kebangsaan Seri Bintang Utara. This system is to give information about the information school, PTA information, e-learning and also gallery school. This system also provides facility to students through learning online with provide training in the system.

This kind of system is a bit same with what I am going to develop for my current project. But this existing system is just show for the information school only not include like my others function and but the system that there is this established by using joomla, between lack observably in this system is color, color used too dark (gray), this cause for information displayed cannot be clearly seen.

Otherwise about this system, it has a menus view in the left-hand side of the system which is the selection for the user to choose any of the given menu. So as my current project, I tend to create such like that at the left-hand side of my system.

Utama Profil Organisasi PIBG Kokurikulum Galeri Foto Pautan



Sekolah Bestari
Sekolah Cemerlang
Sekolah Berprestasi Tinggi



SK Seri Bintang Utara

Taman Shamelin Perkasa, Cheras, 56100 Kuala Lumpur



Sekolah



[Info Sekolah](#)

PIBG



[Info PIBG](#)

e-Learning



[e-vpc.net](#)

Galeri Foto



[Galeri Foto](#)

Log Masuk

Username

Password

Remember Me

- [Forgot your password?](#)
- [Forgot your username?](#)
- [Create an account](#)

Apakah FrogVLE? 

Written by Rahim Omar
Tuesday, 01 October 2013 21:19

Apakah FrogVLE?

Frog adalah VLE yang dipilih bagi projek [1BestariNet](#). Frog mempunyai fungsi sebagai komuniti pembelajaran bagi seluruh warga sekolah.



Persekitaran Pembelajaran Maya Frog, atau lebih dikenali sebagai VLE ialah satu sistem pembelajaran berdasarkan jaringan yang menyerupai pembelajaran dunia sebenar dengan mengintegrasikan konsep pendidikan konvensional dengan kaedah maya. Sebagai contoh, guru-guru dapat memberi tugas, ujian dan menyemak tugas secara maya, sementara pelajar dapat menghantar tugas serta menyemak markah menerusi Frog VLE.

Foto Aktiviti

Figure 1.3 The official Portal Sekolah Kebangsaan Seri Bintang Utara

1.3 CURRENT SYSTEM AND ITS LIMITATION

System Sekolah Kebangsaan Batu 3 is a web based system. This system is limited to two users only which are administrator who is responsible to manage the information of about school and the other user which is general user is going to use the system by get information.

In addition, in this system will be build several functions like sms notification, chat box, This will facilitate all parties to communicate between one with each other to get the information and share information via the function.

Time to complete the project is not limited because the project always can be changed if the client of the project want it to be difference than before and requirement are always can be changed. So I'm not sure that this project will be done in one year.

1.4 METHOD(S) OF APPROACH

1.4.1 Waterfall Model

Waterfall Model is one of the most widely used Software Development Process. It also called as the "classic life cycle" or "Linear Sequential model". It is widely used in the commercial development projects. It is called so because here, we move to next step after getting input from previous phase, like in a waterfall, water flows down to from the upper steps.

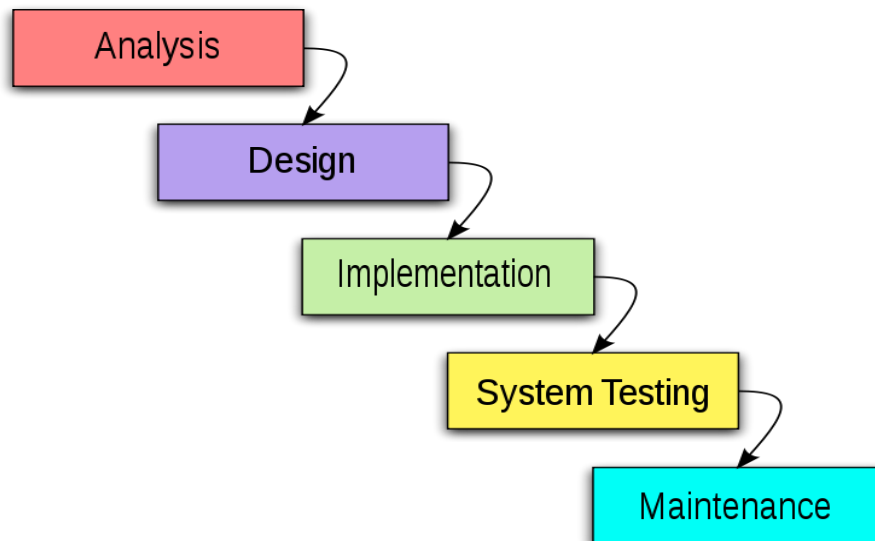


Figure 1.4 Waterfall model

For my project system, I think the waterfall model is the best method because of the approach of my clients clear about the system and the he thought it must be the phase to develop the first plan. In fact it take a long times to solve one by one with the following phases in the waterfall model.

The waterfall model is a sequential design process, often used in software development processes, in which progress is seen as flowing steadily downwards through the phases of Conception, Initiation, Analysis, Design, Implementation, System Testing and Maintenance.

1.5 INDICATION OF SCOPE AND LIMITATION

It is too vast for any single research work under a given time frame to cover all the topics related to Portal Sekolah Kebangsaan Batu 3.

This project will focus on four scopes which are:

a) Target User

- i. Portal is designed solely for the students, teachers, parents and staff of Sekolah kebangsaan Batu Tiga.
- ii. Administrator will have the name so that it can administer the project. The administrator also responsible if the data increase and responsible in data keeping, information update and entire control of the system.

b) Software

i. PHP

PHP is a scripting language that is often embedded into HTML to add functions HTML alone can't do. PHP is stand for Hypertext Pre-processor that allows you to collect, process and utilizes to create a desired output. In short, it lets you interact with your pages. PHP is able to perform a number of tasks including printing data, making simple Boolean choices and making comparisons. PHP is available as a processor for most modern web servers and as a standalone interpreter on most computing platforms and operating system.

ii. Macromedia Dreamweaver CS6

There are many benefits using Macromedia Dreamweaver CS6 in developing screen layout. Dreamweaver CS6 has added a number of new features to make it more effective for web designers and developers who need to create websites and applications in the global market. Adobe is focusing on keeping web designers ready for mobile and giving the features to need to create responsive web designs and the able to create an interesting interface.

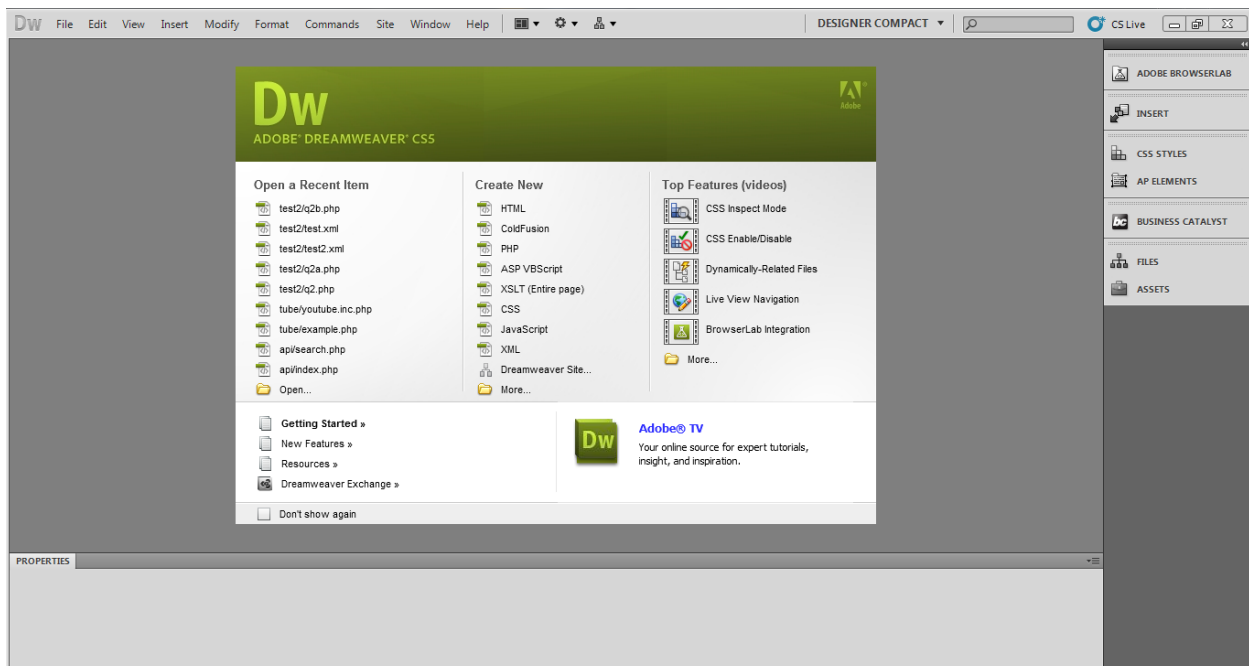


Figure 1.5 : Interface of Adobe Dreamweaver CS6

c) Database

i. PhpMyAdmin

PhpMyAdmin is a free and open source tool written in PHP intended to handle the administration of MySQL with the use of a Web browser. It can perform various tasks such as creating, modifying or deleting databases, tables, fields or rows; executing SQL statements; or managing users and permissions.

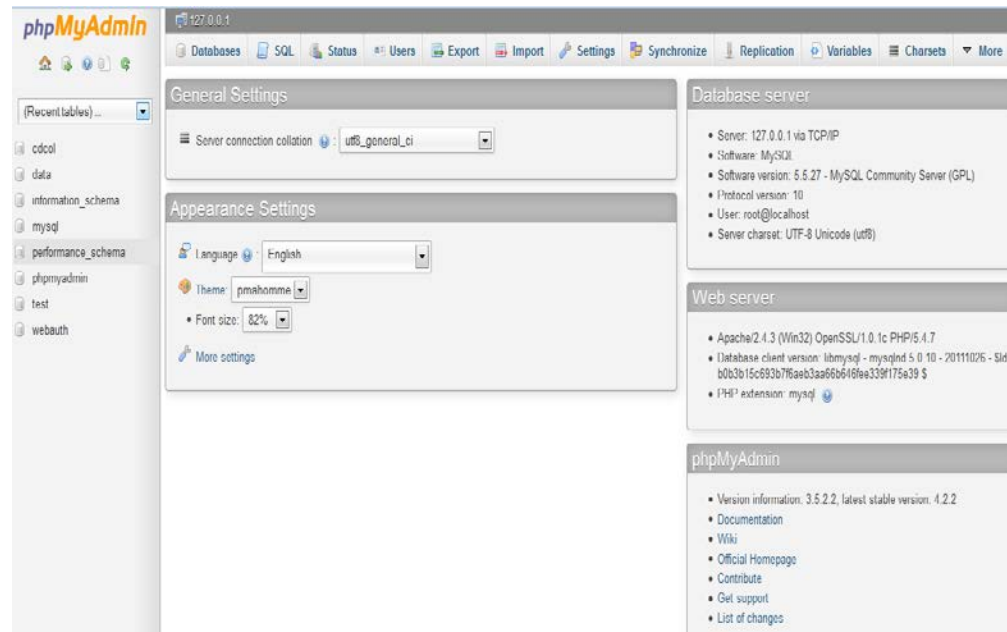


Figure 1.6 : Main Interface of MySQL

d) Function

The function of this project is to: -

- i. Provides a Portal system.
- ii. Providing registration for new users and admin.
- iii. Provide the data to update user profile.
- iv. Provide the social network
- v. Provide the enhancement system and a Portal system.

1.6 OUTLINE MATERIAL PRESENT IN REST OF THE REPORT

There are three parts in this report. Introduction, report body and conclusion of the system.

Part 1: Introduction

This chapter explains generally on the project, Portal Sekolah Kebangsaan Batu 3. It is consist of introduction, problem statement, objective, review of previous system and relationship current project, current system and its limitation. Also, all method and material use to develop this system being reviewed and the limitation of scope of the system.

Part 2: Report Body

Basically, this section focuses on the critical part of the system. Started with user requirement and detailed on the design of the system will be stated in this part. Other

Than that, discussion and analysis of material used, also testing plan and their result also recorded in this part.

Part 3: Conclusion

Based on the result, a conclusion must be made and it will be documented in this part. Significant contribution and suggestion for future work of the project also being study and to be think trough.

REPORT BODY

2.1 USER REQUIREMENT

Detail user requirement has been discussed with the client of the project Sekolah Kebangsaan Batu 3. An agreement has been made and the client has agreed with the requirements needed in the system. There are two users of portal, administrator and user, these requirements have been discussed with the client by explaining the flow of the system. They had agreed the design should include a sequence diagram and use case diagram for technical purpose.

2.1.1 Product Perspective

The Portal Sekolah Kebangsaan Batu 3 will develop using PHP scripting language, Adobe Dreamweaver CS6, Apache as the database engine, and interact with MySQL server.

2.2 TECHNIQUE/THEORY/MODELLING/FLOW CHART/STORY BOARD

2.2.1 System Interface

The system interfaces are as below:

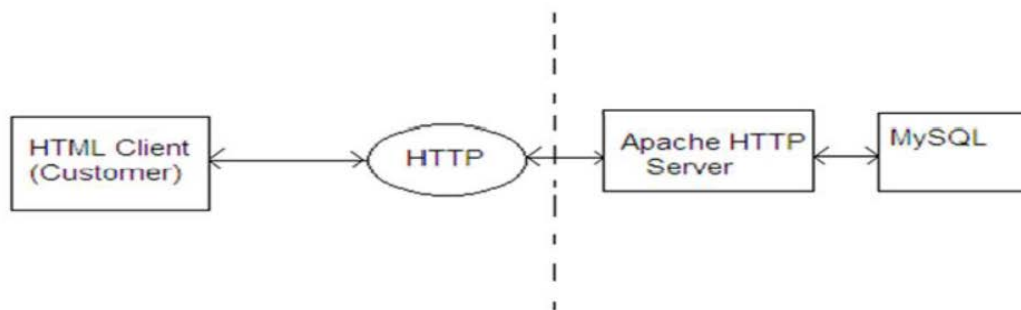


Figure 2.1: System Interfaces

2.2.2 User interfaces

There are three different Categories of users who will be use the system of teachers, students, parents. All users can access the system from a web browser. The application should allow the basic process such as update, delete, insert and view to all users. The Context Diagrams show the user interface of the system:

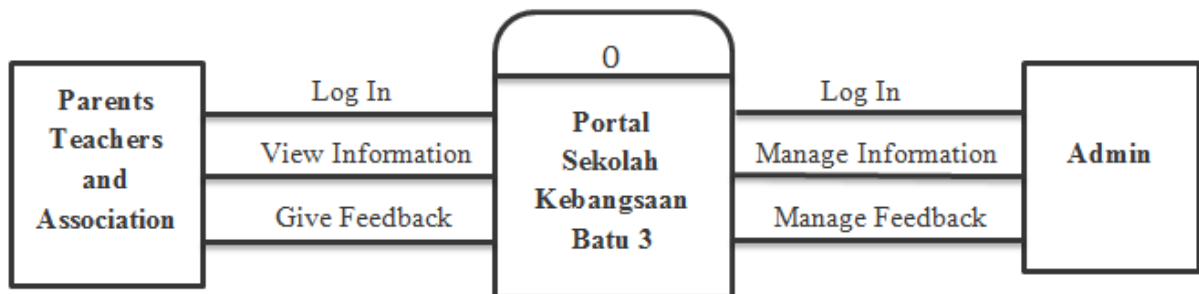


Figure 2.2 : Context Diagram of SKBT

2.2.3 Hardware Interface (Client)

Requirement Hardware:

Table 2.1: Hardware Interfaces

| Hardware | Minimum Requirement |
|-----------------|----------------------------|
| Processor | Intel i5 Care |
| Ram | 4.00 GB |
| Hard disk | 500 GB |